



From left to right: Bagatelle Double Tassel Tieback, Braided Gimp, Braid and Scalloped Tassel Fringe in Dewdrop
FABRIC COLEFAX & FOWLER



Unfolding of a New Era

After celebrating our 25-year milestone, Samuel & Sons eagerly anticipates the unfolding of the next quarter-century. Guided by an unwavering commitment to innovation, exceptional craftsmanship, and service within the realm of interior design, we are poised for the emergence of a new era.

With our unparalleled selection of beautifully crafted passementerie, this season, we are pleased to debut two distinct collections, inspiring you with endless possibilities to bring your vision to fruition.

BAGATELLE: Crafted by the internationally acclaimed interior designer Timothy Corrigan, this meticulously curated collection pays tribute not only to a bygone era's grace but also to a rich historical heritage, preserving its essence for generations to come. Inspired by neoclassical French passementerie, Bagatelle is an elegant collection of lustrous fringes, braids, and tassels in a palette of sumptuous colors. The collection skillfully translates classical details into a contemporary context by striking the balance between grace and warmth.

PERFORMANCE LIBRARY: is a treasure trove featuring patterns from renowned collections such as Printemps, Saisons, Regatta Terrace, Aspen, and Oceanside. This extensive collection comprises over 250 SKUs, including cords, borders, fringes, and tassel tiebacks, woven with exceptional durability. Designed to withstand the harshest elements, these elements promise a lifetime of use. From UV resistance to mold and stain repellency, each pattern is woven to endure, ensuring they stand the test of time in any application. The collection offers a vast and diverse color palette, enhancing any scheme, from muted neutrals to vibrant hues, with each tone curated for limitless possibilities.



CONTENTS

Bagatelle
6-13

Celebrating 25 Years
14-15

**Inside Rebecca Gardner's
NYC Pied-à-Terre**
16-19

Oceanside
20-23

**What Designers
Think About Tassel Fringe**
24-27

Taos
28-29

Dorset
30-31

Sophie
32-33

Technical Specs
34-39

From top to bottom: Laguna Tassel Fringe in Ocean Blue, Dragonfly, Poolside and Sunset

Bagatelle Collection

Inspired by neoclassical French passementerie, Bagatelle is an elegant collection of lustrous fringes, braids, and tassels in a palette of sumptuous colors.

SAMUEL & SONS
TIMOTHY CORRIGAN



From top to bottom: Bagatelle Double Tassel Tieback, Blocked Marabout, Cord with Tape, Scalloped Tassel Fringe and Border in Wisteria GREEN CUSHION FABRIC PIERRE FREY

From left to right: Bagatelle Scalloped Tassel Fringe and Double Tassel Tieback in Bloom and Chevallerie Appliqué Border in Macaron CUSHION FABRIC NOBILIS



From left to right: Bagatelle Velvet Border in Petal, Braided Gimp and Key Tassel in Bloom



Bagatelle Braid in Petal, Bloom, Jonquil, Dewdrop, Hydrangea, Wisteria, and Fern

“Our collaboration with Timothy was an honor, driven by his unique ability to synthesize architectural, ornamentation, history, beautifully crafted textiles, and modern relevance; our journey together immersed us in the language of 18th-century neoclassical passementerie, skillfully translating its details into a contemporary context by striking the balance between grace and warmth.”

- Marisa Gutmacher, VP of Design, Samuel & Sons





TIMOTHY'S THOUGHTS

Can you walk us through your inspiration for Bagatelle?

Around two years ago, I went to the then newly opened, Hôtel de la Marine museum in Paris, and was struck by the combination of elegant sophistication of the fabrics and colors used in the restoration of the private apartments. Louis XV has always been my favorite period in French architecture and design and that visit to the new museum inspired me to go back and delve more into the textiles and passementerie of that particularly elegant period. The Bagatelle collection is a direct result of that research and the ideas that presented themselves.

How do you breathe new life into the French Neoclassical style?

The French Neoclassical period is a direct result of the revival of interest in classical (both Greek and Roman) architecture and design. Like all design trends, it took from the past and re-interpreted it for the mid-18th to the early 19th-century. The Bagatelle collection is very much the same, in that it draws upon some of the design motifs of that earlier period, but presents them in fresh new ways in terms of construction and mixture of styles in the same piece, whether it is a tape or tassel.

The importance of artistry and craftsmanship is evident in all you do, how does this reverence for handcraft translate in the collection?

Samuel & Sons has always been synonymous with the highest level of craftsmanship. Developing this collection with them was so much fun because we wanted to really push the borders in terms of detail and luxury. I am so incredibly proud of the collection that we accomplished together.

The colors in this collection are so special. What was the process of selecting this palette?

Like everything in design, color trends are always on a pendulum going from one side to another. We have now moved away from the cooler, gray color palette to warmer tones of tan and cream. Likewise, while strongly saturated colors are very much in fashion at the moment, colors are becoming more complex and sophisticated. We intentionally strived to have colors that were subtle enough that they could easily blend with many other shades.

Do you have a favorite style (or colorway) from the collection?

My favorite pieces in the collection are the two larger tapes: the Bagatelle Border and the Bagatelle Braid. The Border has a crisp contemporary feeling that can be used in either a classic or modern setting. The Braid has wonderful texture and rich detailing and can be used in so many different applications. My favorite two colorways are Dewdrop and Jonquil: Dewdrop is so incredibly chic and understated that it packs a lot of punch without having to shout. The Jonquil colorway is a delightful blend of sunny yellows and as a color, yellow is coming back in a big way in home design. Yellow makes any space feel happier.

As a designer with projects all over the globe, you bring a different perspective to designing product. How does designing a trim collection differ from designing a home?

Interestingly enough, for me, developing a trim collection is not that different from designing a home because in both cases, I strive to create something with a timeless feeling that doesn't tie into any specific trend. We have all seen homes or products that feel as if they are so "on trend" that they will soon look out-of-date. To me, the best-designed homes or products are those that are as appropriate ten years from now as they are today.

You are an avid trim user outside of your work with us. In your eyes, what is it about trim that makes an interior come to life?

Well, first of all, you have to know that everyone in our offices knows that I believe so much in the ability of trim being able to transform a beautiful piece into something extraordinary, that my nickname has become Timothy! Seriously, whether it be a lampshade, a pillow, an upholstered wall, you name it, adding trim elevates a room to another level. As mid-century designer, Charles Eames, so aptly said: "The details are not the details. They make the design."

How do you envision other designers using this collection? Is there somewhere in the world you'd like to see it used?

It is so great to see how strongly trim has come back into style. Young designers see it as an opportunity to take a standard product and make it bespoke for that client. Trim is being used in fun new ways and it is one of the easiest and least expensive ways to make each piece in a home unique.

If you could only use one type of trim for the rest of your career, which would it be and why?

Now that is an unbelievably difficult question to ask me because it is not uncommon for us to use three or four different trims on a single piece of furniture; so to have to choose just one is nearly impossible. If pressed to answer, my response would be: for furniture, I would select a tape, because of its ability to be used in different ways (on the skirt, to border cushions, or even to outline the entire piece). For window coverings, I would choose a terrific scalloped tassel fringe because of the way that it elevates a Roman shade or stack of drapes into a work of art. The scalloped aspect is important because it allows the tassels to hang well either on the horizontal or vertically; there is something so special about seeing the way light filters through tassels at a window.

Opposite page: Bagatelle Braided Gimp and Single Tassel Tieback in Jonquil
Below: Bagatelle Velvet Border in Hydrangea



Celebrating 25 Years

A New Chapter in Passementerie

As 2023 came to a close, we reopened the doors to Samuel & Sons newly renovated New York flagship showroom to commemorate 25 years of passementerie excellence. Led by world-renowned interior designer and passementerie expert, Timothy Corrigan, this renovation marks a significant milestone since our founding in 1998. Its transformation represents our unwavering dedication to innovation and enduring design principles, all while paying homage to our heritage and reinvesting in the city we call home.

Founder Samuel Cohen opened the showroom next to the famed D&D Building as an extension of fashion's famous resource M&J Trimming, which he owned with his brother. The company, dedicated to providing the same service and product innovations to the interiors world as it had the fashion industry, established the Samuel & Sons brand.

"The brownstone has been our home for 25 years. It's where we founded Samuel & Sons and grew it into the next generation family business," explains Michael Cohen, President of Samuel & Sons. "The new showroom will be the ultimate passementerie shopping experience for today's interior designer while maintaining our original showroom's heritage."





Inside
Rebecca
Gardner's
NYC Pied-à-Terre

Founder of House & Parties, Rebecca Gardner invites us into her Greenwich Village pied-à-terre — an ode to intimate fêtes and unapologetic maximalism. Read on to discover the inspiration behind Rebecca's distinctive style and her tips for mastering trim in parties and interiors.



Photographed by Annie Schlichter | Styled by Bebe Howorth

Samuel & Sons: Can you walk us through the inspiration behind your fabulous pied-à-terre?

Rebecca Gardner: The apartment is on the highest floor in one of Greenwich Village's highest buildings that was once the Fifth Avenue Hotel. It's a glamorous address with a big brass awning and marble on every surface. I wanted the rooms to feel swishy despite their modest size. The design directive was very straight forward: den of iniquity at the turn of the last century. Everything covered in tassels.

How would you describe your personal style?

Fortune favors the bold.

How do you balance making a space feel like home while maintaining a stylish interior ready for hosting?

Oh I think that comfortable spaces that feel like home ARE stylish interiors ready for hosting. You have to be comfortable to have a good time and you have to have a good time for a successful party. Circle of (my) life.

Color is a defining element of this space. How did you develop such a vibrant palette that you can also live with day-to-day?

All of the rooms face south so I have a glorious sunset each evening. When the sun hits the yolky silk curtains and bounces off of the paprika carpet onto the dirty lavender walls - it's on fire. This is my pied-à-terre so I'm mostly here for pleasure. I'm out and about, working, most days. These spaces are to enjoy in the evening.

You have a lot of classical design elements, like passementerie, but the rooms as a whole feel fresh and whimsical. How do you walk that line between timeless and fun?

Coco Chanel supposedly said "...before you leave the house look in the mirror and remove one accessory." I'd like to point out that the fashion icon was known to wear eight to nine ropes of pearls at a time. I always add a few more notes just to make sure no one misses the point.

This project does not shy away from trim. How would you describe trim's role in this space?

Trim makes upholstery, curtains, lampshades, pillows, bookshelves and everything else look finished AND custom AND expensive. All of the tassels certainly help to tell my Victorian brothel narrative, but you are sure this madam is watching her books.

Would you credit your comfort with trim to your Southern upbringing, or is that something that has developed over time?

I don't know if trim is Southern, but it's certainly classic. I enjoy making spaces in good taste and then I serve them too much champagne. Nothing should ever be too appropriate. Boring is the worst.

The Caitlin Tassel Fringe has been a designer favorite this past year. What is it about this finishing touch that appealed to you for the bedroom?

I've had a small memo of this decadent fringe on my bulletin

board for years. The scale is lush and dramatic. The cotton threads are matte and a youthful alternative to shiny silk. I have a cheap floor light (like you would use on a parlor palm) on the floor behind my bed. It casts a killer shadow on the fringe - like a magician.

As a self-professed maximalist, how do you determine when a space has reached its zenith, a point where you feel it's complete and resist the urge to add more?

I know the space is finished when I'm ready to have a party. The truth is, no room is ever really complete.

Trim is often associated with interior design, but you've incorporated it into countless events. Talk us through trim's place in party planning.

Oh, I put key tassels on the corners of menu cards, tape with fringe around table lampshades, giant tie-backs on a Christmas tree! I went to a party last week and hung tassels from my Deco diamond ear clips. Everywhere! Anywhere!

What are your non-negotiable design details for hosting a party?

This never changes: flattering candlelight and heavy pours.

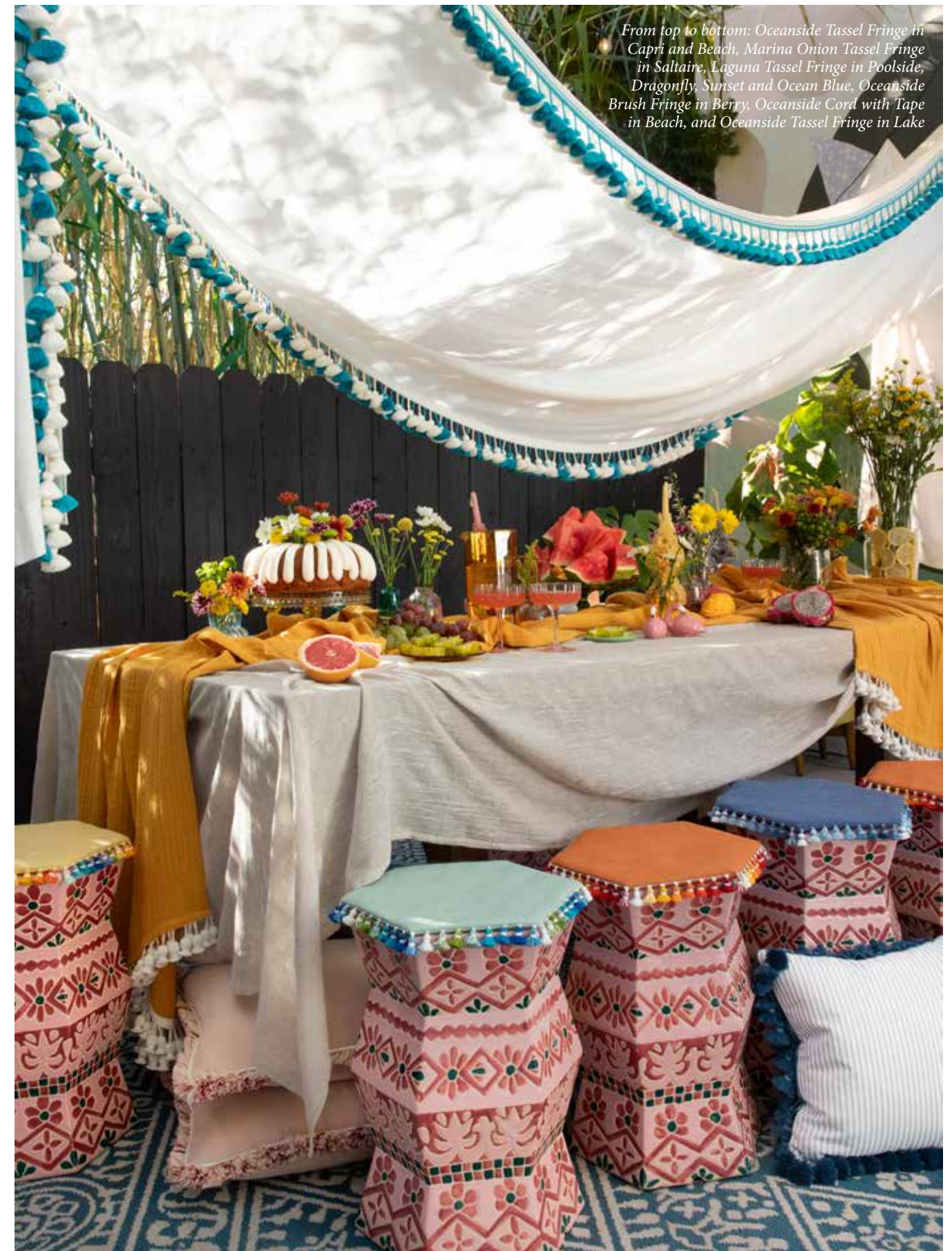
What advice do you have for designers who have yet to embrace trim as wholeheartedly in their projects?

Trim finishes all interior styles. A grosgrain cord on the leading edge of a simple curtain pushes that curtain further towards elegance in a modern interior. Trim adds interest. If you don't believe me, count your yards of self-welt and weep.



Oceanside Collection

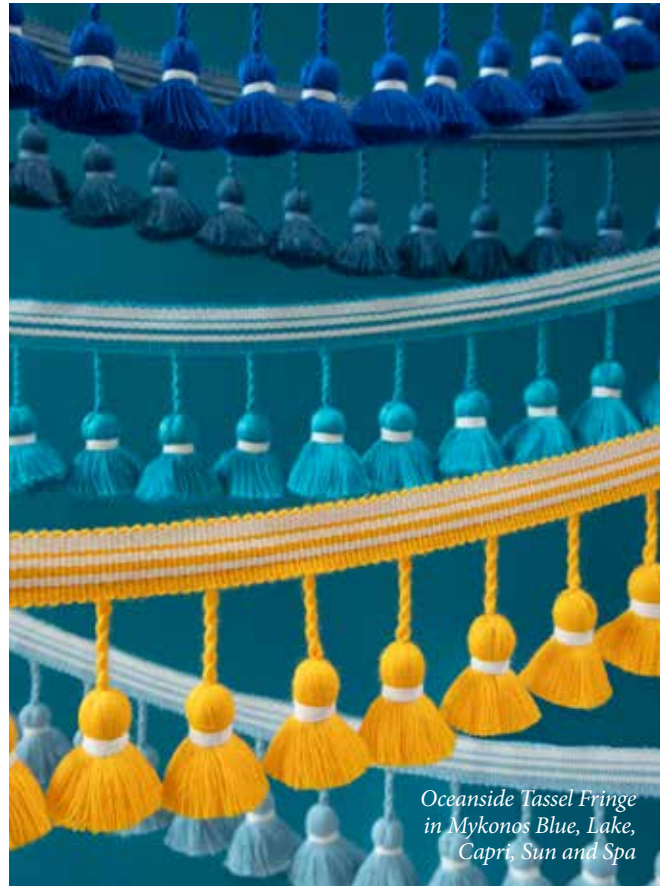
Within the Performance Library, we are thrilled to unveil our Oceanside collection, featuring a selection of cords, brush, and tassel fringes that evoke the serenity of coastal living.



From top to bottom: Oceanside Tassel Fringe in Capri and Beach, Marina Onion Tassel Fringe in Saltaire, Laguna Tassel Fringe in Poolside, Dragonfly, Sunset and Ocean Blue, Oceanside Brush Fringe in Berry, Oceanside Cord with Tape in Beach, and Oceanside Tassel Fringe in Lake



From top to bottom: Oceanside Brush Fringe in Marine, Sea Grass and Berry



Oceanside Tassel Fringe in Mykonos Blue, Lake, Capri, Sun and Spa



Top to bottom: Oceanside Brush Fringe in Sea Grass, Printemps Brush Fringe in Moss and Avalon Chevron Border in Aquarium

From left to right: Oceanside Cord with Tape and Oceanside Tassel Fringe in Mykonos Blue, and Oceanside Brush Fringe in Marine





What Designers Think of Tassel Fringe

A trend on the rise, six designers talked to us about the transformative power of tassel fringe. From benches to bedding, read on to find out how today's top designers use this delightful detail.



MAGGIE B DILLON
Maggie Dillon Interiors

"Be it on the leading edge of drapes or the bottom of Roman shades, tassel fringe is the perfect element to include for added depth and dimension. The texture it provides doesn't hurt, either. Don't be afraid to use it in less traditional applications such as the perimeter of a bench, the skirt of a sofa, the bottom of a lampshade; options are endless with tassels!"



LONIKA CHANDE
Lonika Chande

"I love to use Samuel & Sons tassel fringes on bed coronas... I used the Orsay Silk Tassel Fringe on my own bed corona at home which I chose because the Spring Greens colourway complimented the fabrics so brilliantly. Like everything else Samuel & Sons does, the colour choices in this range are heaven, and there is a fringe to suit each and every scheme."



ALESSANDRA BRANCA
Branca

"Some might be surprised to hear that although I love lots of ornamentation, I like it in good measure. So when I use a tassel fringe, I like to do it on something that is limited in a room... And I think that that's what's so beautiful about trims and tassels and cords and all that is the ability to use them the way you use jewelry. They really are the jewelry of a room and design."



CAROLINE GEDIERE
Caroline Gediere Design

"Nothing elevates a piece quite like a tassel fringe. Whether on drapery edges, along the bottom of a skirt of an oversized center table or a sofa, or dangling from the bottom of a fabric shade, it finishes with élan and lets you know this piece is special."



ALEX PAPACHRISTIDIS
Alex Papachristidis Interiors

"Even though I am such a classicist, I love to use trim in a fresh way. I still love a gimp on a dining chair, a cord on a sofa, a tassel fringe on a table skirt and a moss fringe on a pillow. For me, trim is a timeless finishing detail to a room."



NINA CAMPBELL
Nina Campbell LTD.

"The classic is to add tassel fringe to a sumptuous pair of plain curtains. It adds luxury and sophistication to any leading edge. We also like to use it to introduce other colours into the scheme in a subtle way."

Headshots courtesy of the designers, Nina Campbell photo by Sylvie Cogramme

FROM TRADITIONAL TO TRENDSETTING, SOFTENING TO STATEMENT-MAKING, THERE'S NO PROJECT THAT COULDN'T BENEFIT FROM A TOUCH OF TASSEL FRINGE.

This ornamental style of fringe is hand-tied at every tassel whether it's fastened with a bead, secured with a ruche, or bound with a simple string. Tassel fringe can vary in material, width, color, and intricacy to create a versatile range of exciting shapes and textures.



Dorset Gimp and Ombré Tassel Fringe in Honey



Gypsy Embroidered Border in Sherbet and Carolina Tassel Fringe in Heather



Caitlin Tassel Fringe in Olive

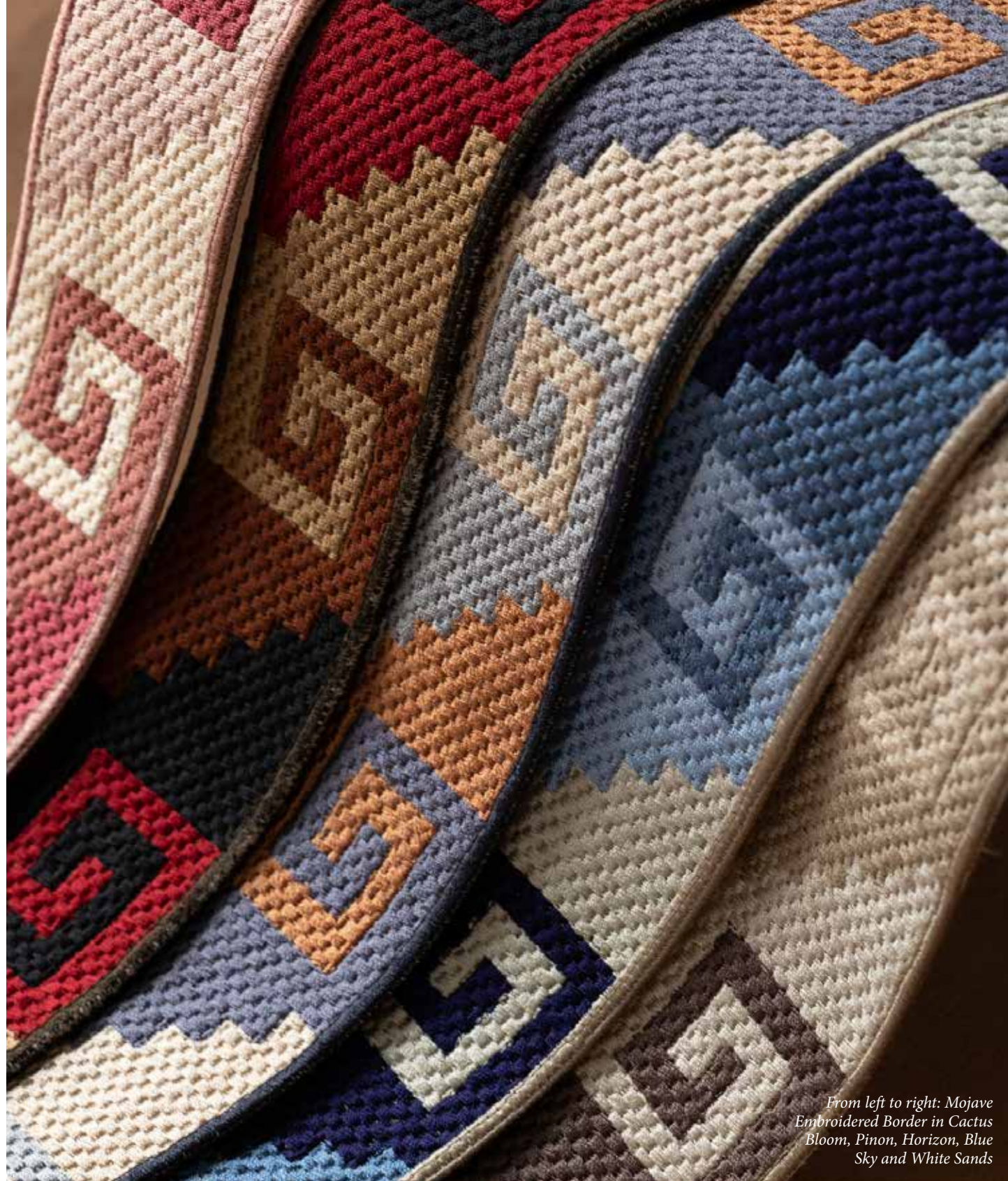
APPLICATION TIPS:

Make the ordinary extraordinary. Add intrigue to the silhouette of a lampshade with the Dorset Ombré Tassel Fringe in Honey or finish the bottom of a drape with a sumptuous Caitlin Tassel Fringe detail in Olive. For a small dose, a simple pillow can be transformed into your own bespoke creation with curated layers of trim, shown here by pairing the Carolina Ombré Tassel Fringe in Heather with the Gypsy Embroidered Border in Sherbet.

You can now take tassel fringe outside with our newest additions from the Oceanside collection. Choose vibrant details from a rainbow of Laguna Tassel Fringe or add built-in layers with the Marina Onion Tassel Fringe's double hand-tied construction and never worry about sun-fading or staining.

Inca Tassel Fringe in Vermillion





From left to right: Mojave Embroidered Border in Cactus Bloom, Pinon, Horizon, Blue Sky and White Sands

Taos Collection

Taos is a distinctive collection of artisanal passementerie with regional patterning and vivid color influences derived from the American Southwest.



Sedona Embroidered Border in Blue Sky and Bali Cotton Skirt Tassel Fringe in Cream



*Dorset Tassel Fringe
in Aquamarine*



*From top to bottom: Dorset
Ombre Border and Striped
Border in Aquamarine*

Dorset Collection

Dorset is a classical collection of passementerie composed of vintage-inspired borders, tonal fringes, and a scalloped velvet border in a repertoire of sophisticated hues.



From top to bottom: Sophie Brush Fringe in Dove, Glass, Wedgewood, Mineral, Rose Water, Tulip, Currant, Dijon, Basil, Viridian Green and Walnut

Sophie Collection

Sophie is a beautifully crafted, mercerized cotton collection of luxury basics composed of assorted fringes, cords, borders, and tiebacks in a palette of tonal shades.



From left to right: Sophie Tassel Tieback, Bullion Fringe, 3/8" Cord with Tape and Brush Fringe in Rose Water
WALLCOVERING **DEDAR**



Bagatelle Collection

CT-60848 1/4" (5 mm)
Bagatelle Cord with Tape /
Câblé sur pied
 Fiber Content Varies By Color
 Colours: Bloom, Dewdrop, Fern, Gardenia,
 Gilded Gold, Hydrangea, Jonquil, Petal,
 Scarlet Rose, Wisteria

BR-60846 1.25" (32 mm)
Bagatelle Marabout /
Marabout
 Fiber Content Varies By Color
 Colours: Fern, Gardenia, Gilded Gold,
 Hydrangea, Jonquil, Petal, Scarlet Rose

GB-60845 1.5" (38 mm)
Bagatelle Braid /
Galon armuré
 Fiber Content Varies By Color
 Colours: Bloom, Dewdrop, Fern,
 Gardenia, Gilded Gold, Hydrangea,
 Jonquil, Petal, Scarlet Rose, Wisteria

TT-60853 2.25" (57 mm)
Bagatelle Tassel Fringe /
Frangé mèches
 Repeat / Raccord : 3.3" (84 mm)
 Fiber Content Varies By Color
 Colours: Bloom, Dewdrop, Fern, Gardenia,
 Gilded Gold, Hydrangea, Jonquil, Petal,
 Scarlet Rose, Wisteria

GB-60849 1/2" (13 mm)
Bagatelle Gimp /
Lézarde
 Fiber Content Varies By Color
 Colours: Bloom, Dewdrop, Fern,
 Gardenia, Gilded Gold, Hydrangea,
 Jonquil, Petal, Scarlet Rose, Wisteria

BR-60847 1.25" (32 mm)
Bagatelle Blocked Marabout /
Marabout tricolore
 Height / Hauteur : 1.25" (32 mm),
 Repeat / Raccord : 4" (10 cm)
 50% SE, 34% WO, 11% RY, 5% PES
 Colours: Bloom, Dewdrop, Wisteria

BT-60844 2.25" (57 mm)
Bagatelle Border /
Galon large
 Repeat / Raccord : 1.55" (40 mm)
 Fiber Content Varies By Color
 Colours: Bloom, Dewdrop, Fern,
 Gardenia, Gilded Gold, Hydrangea,
 Jonquil, Petal, Scarlet Rose, Wisteria

TF-60851 4.2" (10.5 cm)
Bagatelle Scalloped Tassel Fringe /
Frangé lambrequinée
 Repeat / Raccord : 4.9" (12.5 cm)
 Fiber Content Varies By Color
 Colours: Bloom, Dewdrop, Fern, Gardenia,
 Gilded Gold, Hydrangea, Jonquil, Petal,
 Scarlet Rose, Wisteria

GB-60850 1/2" (13 mm)
Bagatelle Braided Gimp /
Lézarde chevron
 Fiber Content Varies By Color
 Colours: Bloom, Dewdrop, Fern,
 Gardenia, Gilded Gold, Hydrangea,
 Jonquil, Petal, Scarlet Rose, Wisteria

BT-60865 1" (25 mm)
Bagatelle Velvet Border /
Galon velours
 Repeat / Raccord : 2" (51 mm)
 Fiber Content Varies By Color
 Colours: Dewdrop, Fern, Gardenia,
 Hydrangea, Jonquil, Petal

FR-60852 8.25" (21 cm)
Bagatelle Tassel Skirt Fringe /
Frangé mèches
 Repeat / Raccord : 2.7" (68 mm)
 Fiber Content Varies By Color
 Colours: Dewdrop, Fern, Gardenia,
 Hydrangea, Jonquil, Petal

Bagatelle Collection



KT-60854
Bagatelle Key Tassel /
Gland de clé
 Height / Hauteur : 6" (15 cm)
 36% WD, 24% CO, 19% RY, 14% SE,
 3% ME, 3% PES, 1% NY
 Colours: Bloom, Dewdrop, Fern,
 Gardenia, Gilded Gold, Hydrangea,
 Jonquil, Petal, Scarlet Rose, Wisteria



TT-60856
Bagatelle Single Tassel Tieback /
Embrasse 1 gland
 Height / Hauteur : 11.75" (30 cm),
 Spread / Ouverture : 32.25" (82 cm)
 46% WD, 22% CO, 15% RY, 10% SE,
 4% SPUN VI, 1% ME, 1% PT, 1% PES
 Colours: Bloom, Dewdrop, Fern,
 Gardenia, Gilded Gold, Hydrangea,
 Jonquil, Petal, Scarlet Rose, Wisteria



TT-60855
Bagatelle Double Tassel Tieback /
Embrasse 2 glands
 Height / Hauteur : 10.25" (26 cm),
 Spread / Ouverture : 32.25" (82 cm)
 32% WD, 23% RY, 20% SE, 13% CO,
 9% SPUN VI, 1% ME, 1% PT, 1% PES
 Colours: Bloom, Dewdrop, Fern,
 Gardenia, Gilded Gold, Hydrangea,
 Jonquil, Petal, Scarlet Rose, Wisteria





Oceanside Collection



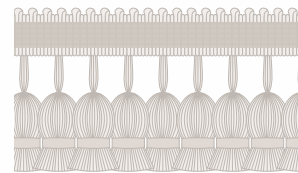
CT-60838 1/4" (5 mm)
Oceanside Cord with Tape /
 Câblé sur pied Oceanside
 92% Solution Dyed PC, 8% PES
 Colours: Beach, Capri, Lake, Mykonos Blue,
 Navy, Spa, Sun



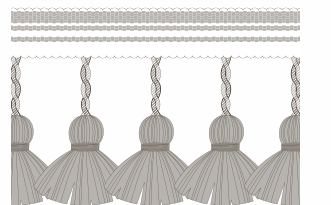
TF-60836 1.4" (35 mm)
Laguna Tassel Fringe /
 Frange mèches Laguna
 Repeat / Raccord : 7" (18 cm)
 92% Solution Dyed PC, 8% PES
 Colours: Dragonfly, Ocean Blue, Poolside,
 Sunset



BR-60871 1.5" (38 mm)
Oceanside Brush Fringe /
 Marabout effilé Oceanside
 100% Solution Dyed PC
 Colours: Berry, Marine, Sea Grass



TF-60837 1.5" (38 mm)n
Marina Onion Fringe /
 Frange oignon Marina
 Repeat / Raccord : 1.5" (38 mm)
 97% Solution Dyed PC, 3% PES
 Colours: Saltaire



TF-60839 3.2" (81 mm)
Oceanside Tassel Fringe /
 Frange mèches Oceanside
 Repeat / Raccord : 1.2" (30 mm)
 96% Solution Dyed PC, 4% PES
 Colours: Beach, Capri, Lake, Mykonos
 Blue, Navy, Pebble, Sand, Spa, Sun

Taos Collection



CT-60643 1/2" (13 mm)
Taos Cord with Tape /
 Câblé sur pied Taos
 48.8% CO, 34.9% SV, 10.4% PES,
 5.6% RY, 0.3% NY
 Colours: Blue Sky, Cactus Bloom, Grand
 Canyon, Horizon, Painted Desert,
 Piñon, White Sands



BT-60637 2" (51 mm)
Mojave Embroidered Border /
 Galon brodé Mojave
 Repeat / Raccord : 7.75" (19.5 cm)
 55% LI, 45% VI
 Colours: Blue Sky, Cactus Bloom, Horizon,
 Piñon, White Sands



BT-60639 2" (51 mm)
Taos Embroidered Border /
 Galon brodé Taos
 Repeat / Raccord : 3.5" (89 mm)
 50% LI, 50% VI
 Colours: Blue Sky, Cactus Bloom, Grand
 Canyon, Horizon, Painted Desert,
 Piñon, White Sands



BT-60635 2.5" (64 mm)
Otero Embroidered Border /
 Galon brodé Otero
 Repeat / Raccord : 2" (51 mm)
 100% VI
 Colours: Cactus Bloom, Grand Canyon,
 Horizon, Painted Desert, Piñon, White Sands



BT-60638 2.75" (70 mm)
Abiquiú Embroidered Border /
 Galon brodé Abiquiú
 Repeat / Raccord : 1.7" (43 mm)
 60% LI, 40% VI
 Colours: Blue Sky, Cactus Bloom, Grand
 Canyon, Horizon, Painted Desert,
 Piñon, White Sands



TF-60642 2.75" (70 mm)
Taos Tasseled Border /
 Galon mèches Taos
 Repeat / Raccord : 3" (76 mm)
 94% SV, 3.8% RY, 2.2% PES
 Colours: Blue Sky, Cactus Bloom, Grand
 Canyon, Horizon, Painted Desert,
 Piñon, White Sands



BT-60641 3" (76 mm)
Sedona Embroidered Border /
 Galon brodé Sedona
 Repeat / Raccord : 5.15" (13 cm)
 50% LI, 50% VI
 Colours: Blue Sky, Cactus Bloom, Grand
 Canyon, Horizon, Painted Desert,
 Piñon, White Sands



BT-60634 3" (76 mm)
Chimayó Embroidered Border /
 Galon brodé Chimayó
 Repeat / Raccord : 1.5" (38 mm)
 50% CO, 40% LI, 10% VI
 Colours: Blue Sky, Piñon, White Sands



BT-60636 3.5" (89 mm)
Cheyenne Ombré Border /
 Galon ombré Cheyenne
 Repeat / Raccord : 2.5" (64 mm)
 100% VI
 Colours: Blue Sky, Cactus Bloom, Grand
 Canyon, Horizon, Painted Desert,
 Piñon, White Sands



BT-60640 4" (10 cm)
Corrales Appliqué Border /
 Galon d'application Corrales
 Repeat / Raccord : 1.5" (38 mm)
 65% CO, 25% PES, 10% VI
 Colours: Midnight, Piñon, White Sands



Dorset Collection



CT-60651 1/4" (5 mm)
Dorset Cord with Tape /
Câblé sur pied
 43% CO, 43% LI, 14% PES
Colours: Aquamarine, Coral, Honey, Leaf, Oyster, Porcelain



GB-60675 1/2" (13 mm)
Dorset Gimp /
Lezarde
 89% CO, 10% PES, 1% NY
Colours: Aquamarine, Coral, Honey, Leaf, Oyster, Porcelain



BT-60656 1.5" (38 mm)
Dorset Velvet Scallop /
Galon velours
 Repeat / Raccord : 2.6" (66 mm)
 40% CO, 40% VI, 20% Spun PES
Colours: Aquamarine, Coral, Honey, Leaf, Oyster, Porcelain



BR-60652 1.5" (38 mm)
Dorset Blocked Brush Fringe /
Marabout effilé
 Repeat / Raccord : 2" (51 mm)
 52% LI, 48% CO
Colours: Aquamarine, Coral, Honey, Leaf, Oyster, Porcelain



BT-60649 1.5" (38 mm)
Dorset Botanical Border /
Galon botanique
 Repeat / Raccord : 3.25" (83 mm)
 58% PES, 42% CO
Colours: Aquamarine, Coral, Honey, Leaf, Oyster, Porcelain



BT-60647 1.75" (44 mm)
Dorset Tweeded Border /
Galon tweed
 65% CO, 35% LI
Colours: Aquamarine, Coral, Honey, Leaf, Oyster, Porcelain



TF-60653 2" (51 mm)
Dorset Ombré Tassel Fringe /
Frangé mèches ombrée
 Repeat / Raccord : 3" (76 mm)
 93% LI, 6% PES, 1% SV
Colours: Aquamarine, Coral, Honey, Leaf, Oyster, Porcelain



BT-60655 2" (51 mm)
Dorset Braided Border /
Galon tressé
 Repeat / Raccord : 1" (25 mm)
 75% LI, 25% VI
Colours: Aquamarine, Coral, Honey, Leaf, Oyster, Porcelain



BT-60648 2" (51 mm)
Dorset Ombré Border /
Galon ombré
 55% PES, 45% CO
Colours: Aquamarine, Coral, Honey, Leaf, Oyster, Porcelain



BT-60650 2.4" (60 mm)
Dorset Striped Border /
Galon rayé
 72% PES, 15% LI, 13% CO
Colours: Aquamarine, Coral, Honey, Leaf, Oyster, Porcelain



TF-60654 3" (76 mm)
Dorset Tassel Fringe /
Frangé mèches
 Repeat / Raccord : 1" (25 mm)
 94% CO, 6% PES
Colours: Aquamarine, Coral, Honey, Leaf, Oyster, Porcelain



BT-60657 4.2" (10.5 cm)
Dorset Embroidered Border /
Galon brodé
 Repeat / Raccord : 11.5" (29 cm)
 80% LI, 10% PC Foam, 10% Spun PES
Colours: Oyster, Porcelain

Sophie Collection



CT-60670 1/4" (5 mm)
1/4" (5 mm) Sophie Cord with Tape /
1/4" (5 mm) Câblé sur pied
 78% CO, 21% PES, 1% NY
Colours: Basil, Cream, Currant, Dijon, Dove, Glass, Mineral, Rose Water, Salt, Tulip, Viridian Green, Walnut, Wedgewood



GB-60669 1/2" (13 mm)
Sophie Gimp /
Lézarde
 95% CO, 5% NY
Colours: Basil, Cream, Currant, Dijon, Dove, Glass, Mineral, Rose Water, Salt, Tulip, Viridian Green, Walnut, Wedgewood



CT-60671 3/8" (10 mm)
3/8" (10 mm) Sophie Cord with Tape /
3/8" (10 mm) Câblé sur pied
 87% CO, 12% PES, 1% NY
Colours: Basil, Cream, Currant, Dijon, Dove, Glass, Mineral, Rose Water, Salt, Tulip, Viridian Green, Walnut, Wedgewood



BR-60667 1.5" (38 mm)
Sophie Brush Fringe /
Marabout effilé
 97% CO, 2% PES, 1% NY
Colours: Basil, Cream, Currant, Dijon, Dove, Glass, Mineral, Rose Water, Salt, Tulip, Viridian Green, Walnut, Wedgewood



TF-60665 1.5" (38 mm)
Sophie Beaded Fringe /
Frangé perles
 Repeat / Raccord : 1.5" (38 mm)
 73% WD, 24% CO, 3% PES
Colours: Basil, Cream, Currant, Dijon, Dove, Glass, Mineral, Rose Water, Salt, Tulip, Viridian Green, Walnut, Wedgewood



BU-60666 8.25" (21 cm)
Sophie Bullion Fringe /
Frangé moulinée
 99% CO, 1% PC
Colours: Basil, Cream, Currant, Dijon, Dove, Glass, Mineral, Rose Water, Salt, Tulip, Viridian Green, Walnut, Wedgewood



TF-60663 2.3" (59 mm)
Sophie Tassel Fringe /
Frangé mèches
 98% CO, 2% PES
Colours: Basil, Cream, Currant, Dijon, Dove, Glass, Mineral, Rose Water, Salt, Tulip, Viridian Green, Walnut, Wedgewood



BT-60664 1" (25 mm)
Sophie Border /
Galon
 100% CO
Colours: Basil, Cream, Currant, Dijon, Dove, Glass, Mineral, Rose Water, Salt, Tulip, Viridian Green, Walnut, Wedgewood



HB-60668
Sophie Cable Holdback /
Embrasse câblé
 Spread / Longueur: 39" (99 cm),
 Cord Diameter / Diamètre: 1.25" (32 mm)
 70% CO, 30% WD
Colours: Basil, Cream, Currant, Dijon, Dove, Glass, Mineral, Rose Water, Salt, Tulip, Viridian Green, Walnut, Wedgewood



TT-60672
Sophie Tassel Tieback /
Embrasse 1 gland
 Height / Hauteur: 11.6" (29.5 cm),
 Spread / Ouverture: 32" (82 cm)
 50% CO, 47% WD, 1% PES,
 1% PT, 1% ME
Colours: Basil, Cream, Currant, Dijon, Dove, Glass, Mineral, Rose Water, Salt, Tulip, Viridian Green, Walnut, Wedgewood



US: 212.704.8000
 UK/EUROPE: +44 (0) 20.7351.5153
 FRANCE: +33 (1) 42.33.22.90
 SAMUELANDSONS.COM



Bagatelle by

TIMOTHY CORRIGAN

FOR SAMUEL & SONS

SAMUEL & SONS IS TRIM.

samuelandsons.com

